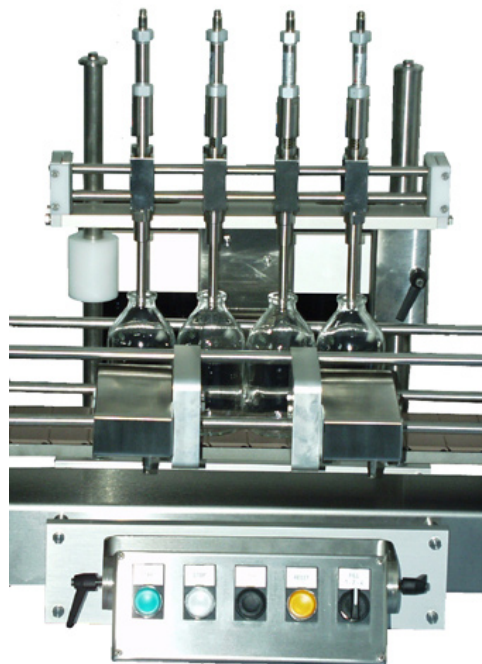


## EG20

### OEM - ELECTRICAL GATING SYSTEM



- Handles 1, 2 or 4 bottles at a time
- Fully automatic when combined with master controller MC12, peristaltic fillers, EBU252 bottom-up filling system or pneumatic diving nozzle system

## Watson-Marlow Flexicon

Frejasvej 2-6  
DK-4100 Ringsted  
Denmark  
Tel. +45 57 67 11 55  
Fax. +45 57 67 05 41  
flexicon@flexicon.dk  
www.wmflexicon.dk



# EG20

# TECHNICAL SPECIFICATIONS

The Flexicon gating system is a very compact and user-friendly system. It can be mounted onto any conveyor and can handle 1, 2 or 4 bottles at a time. It is ideal in combination with:

- Flexicon Multi Filling System
- Flexicon EBU252 bottom-up filling system for fillings up to more than 1 litre of foaming products, or
- Flexicon diving nozzle system for liquids or more viscous products.

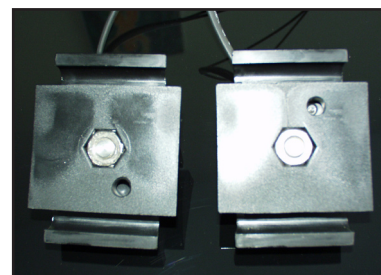
These combinations will create a fully automatic filling system for bottles of various sizes on different types of conveyors.

The Flexicon gating system is unique because:

- it is small and compact
- it is easy to operate
- bottle format change can be done in less than 5 minutes
- all parts can be removed from the conveyor, enabling easy cleaning.

The gating system consists of the following devices:

Two bottle sensors:



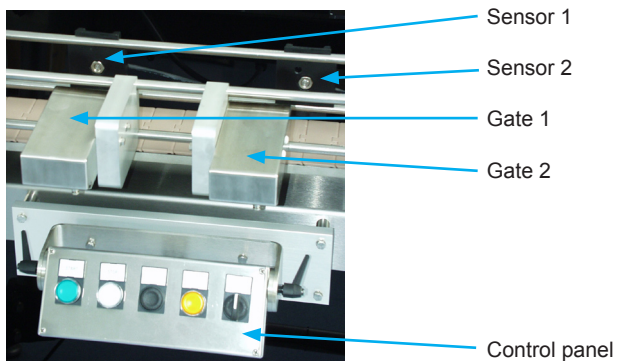
Two gates:



Electrical box (example):



Control panel:



The gating system works with two counting sensors and two gating cylinders, after the following cycles:

- Gate 1 open and gate 2 is closed
- When sensor 1 counts the chosen number of bottles, gate 1 closes and sends a start signal to the filler
- When completed, gate 2 opens
- When sensor 2 counts half of the chosen number of bottles, gate 1 opens
- When sensor 2 counts the chosen number of bottles, gate 2 closes
- Cycle completed

This process is very simple and does not demand any special knowledge from the operator. The system can be adjusted to another bottle size in less than 5 minutes, the sensors are mounted with finger screws and the gates are mounted with Allen screws. Both can be moved along the bars very easily, creating no heavy work for the operator.

Watson-Marlow Flexicon cannot be held responsible for any errors or omissions. Subject to change without notice.